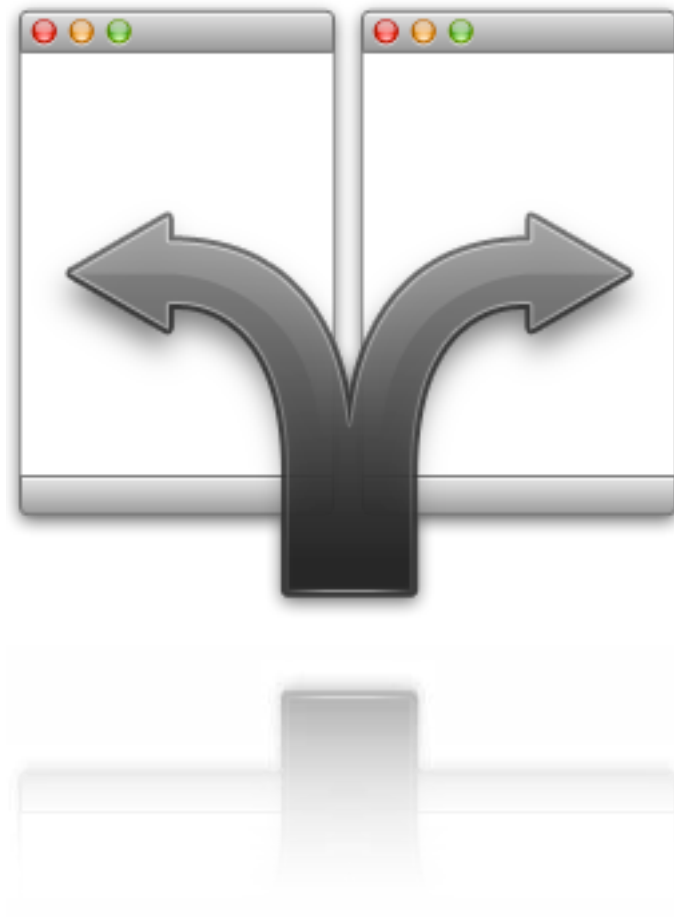


Divvy For Mac OS X Documentation



Mizage

<http://mizage.com>

For support, contact support@mizage.com

Introduction	3
The Problem	3
The Solution	3
Getting Started	4
Quick Start Video	4
Launching Divvy	4
The Divvy Interface	4
Moving your first window	5
Divvy In-Depth	6
The Grid	6
<i>Subdivide the Grid</i>	6
<i>Add or Remove Rows and Columns from the Grid</i>	7
Multiple Screens (Monitors)	7
Shortcuts	7
Preferences	9
General Preferences	9
Appearance Preferences	12
Shortcuts Preferences	15
<i>Create a New Shortcut</i>	15
<i>Edit a Shortcut</i>	16
<i>Delete a Shortcut</i>	16
Licensing	17
Appendix	18
Primer on Keyboard Shortcuts	18

Introduction

The Problem

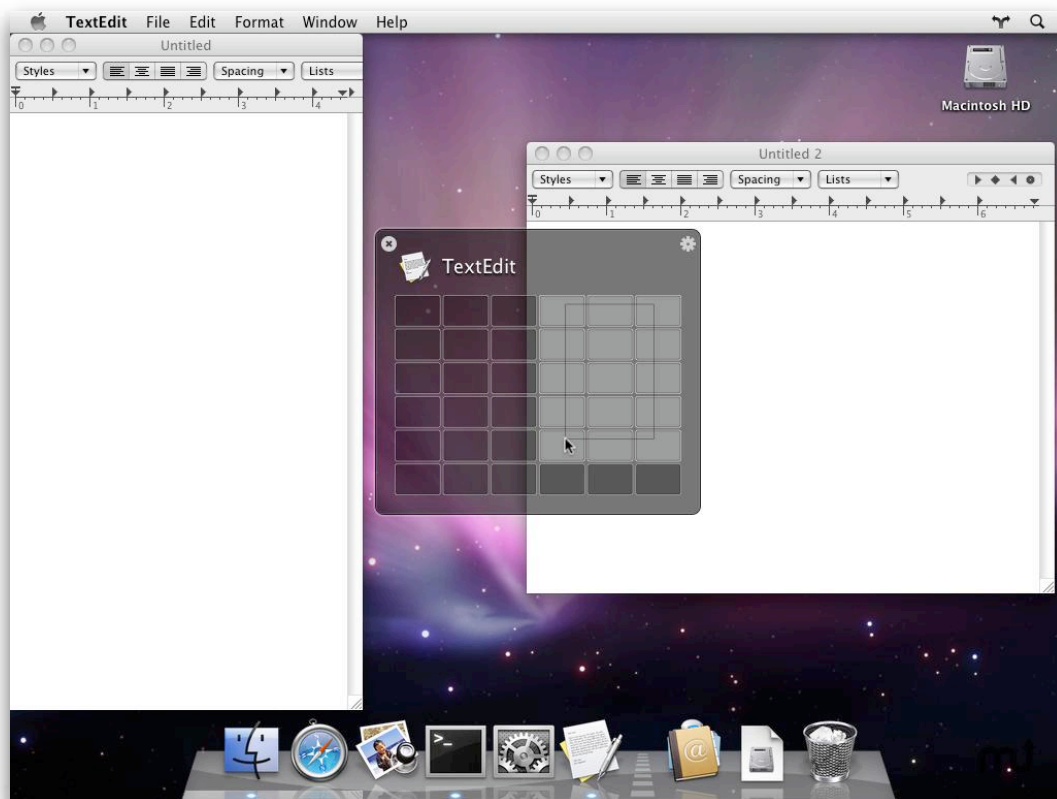
Managing windows on Mac OS X can be frustrating, requiring precision control of your mouse or trackpad for clicking, dragging, pushing and pulling your windows to the size and position you desire. Even with all this work, it's very difficult to get windows exactly where you want them, so most of the time windows are left scattered all over the screen.

The Solution

Divvy is an entirely new way of managing your windows. It allows you to quickly and efficiently "divvy up" your screen into exact portions. This lets you take maximum advantage of your screen real estate without any hassle at all. Window management has never been this easy.

With Divvy, it's as simple as a single click and drag in the Divvy interface and your window will be resized and moved to a relative portion of screen. If that seems like too much work, you can go ahead and create as many different shortcuts as you'd like that resize and move your windows.

Divvy is designed to be quick, simple and elegant, staying out of your way as much as possible while providing the most powerful window management available today.



Getting Started

Quick Start Video

For a quick start introduction to Divvy you may prefer to watch the 3 minute video of Divvy on our website at <http://mizage.com> before returning to the documentation.

Launching Divvy

When Divvy launches, you'll notice it appear in the menu bar as the forked arrow icon.



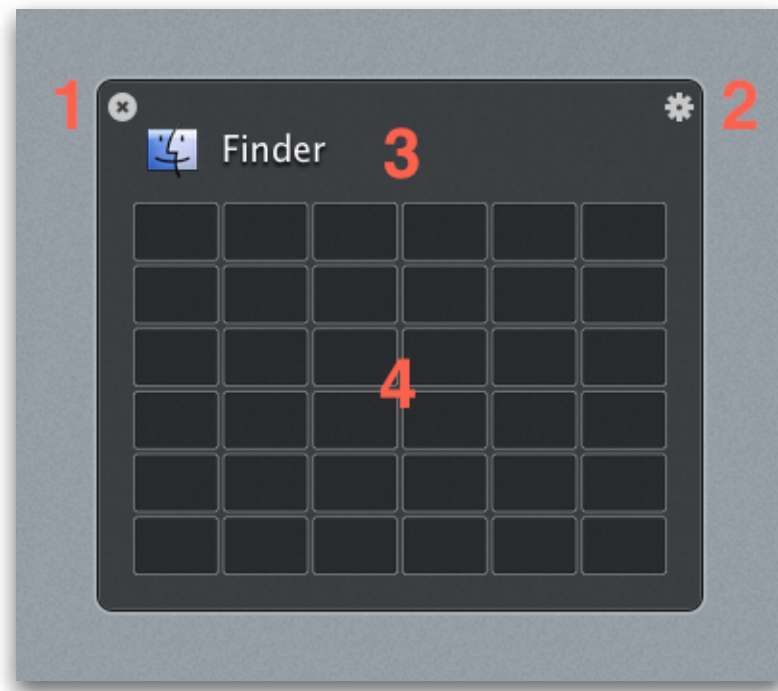
Divvy is designed to run in the background at all times so you can quickly and easily access Divvy when you need to manage your windows.

The Divvy Interface

First, activate the Divvy interface by either

1. Clicking the menu bar icon
2. Pressing a user assigned global keyboard shortcut (see [General Preferences](#))
3. Re-launching the application (Only one instance of Divvy runs at a time, so, simply launching Divvy again from the Dock, Applications folder, or Spotlight will bring the Divvy panel up for you)

The Divvy interface (also referred to as the Divvy panel) will appear in the center of your screen. If you have more than one screen (aka monitor or display), a Divvy panel will appear on each of your screens.



The Divvy panel consists of (1) a button to dismiss the panel, (2) a button to flip to the Divvy [Preferences](#), (3) the icon and name of the active application and (4) the [Grid](#) for selecting an area of your screen.

Moving your first window

Using Divvy is as simple as:

1. Click on the window you want to resize
2. [Activate Divvy](#)
3. Use the mouse to click and drag, selecting boxes in the [Grid](#) according to where you want the window to be moved and resized on screen.

The window will then be moved and resized to fit your screen in proportion to your selection in the Divvy grid and the Divvy panel will automatically dismiss.

TIP: Press the Esc key to quickly dismiss the Divvy panel or to cancel a selection you're making in the grid.

Divvy In-Depth

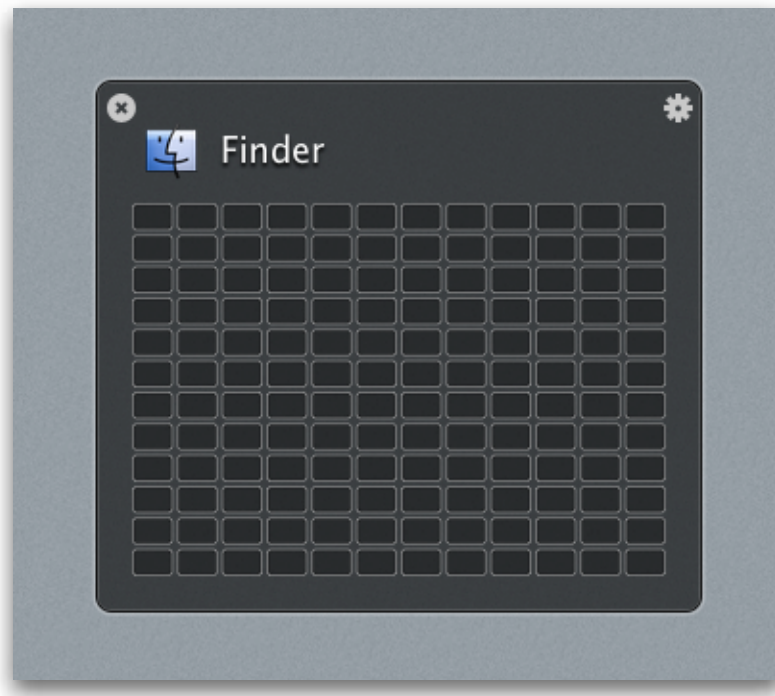
The Grid

The default 6x6 grid size was chosen because it allows you to put two windows side by side (split screen) or three windows side by side. However, we realize you may require more control over your grid to better utilize your screen real-estate, so we have made the grid configurable.

TIP: The default grid size is configurable in the [Appearance Preferences](#)

Subdivide the Grid

Press the ⌘ (Option) key to instantly subdivide the grid for finer control over your window placement. For example, subdivide the default 6x6 grid to get a 12x12 grid. Press the ⌘ (Option) key again to revert back.



TIP: To prevent the Divvy panel from being automatically dismissed after resizing one window, see "Keep panel open until dismissed" under [General Preferences](#).

Add or Remove Rows and Columns from the Grid

You can add or remove rows and columns from the Grid on the fly. You can also configure a default grid size that will be shown whenever you activate the Divvy interface or create a new Shortcut (see [Appearance Preferences](#) below).

You can add rows and columns up to a maximum of 10x10 (which can be subdivided to 20x20). You can remove rows and columns to a minimum of 1x1.

Operation	Keyboard Shortcut
Add a row	⌘+ (Cmd + Plus)
Remove a row	⌘- (Cmd + Minus)
Add a column	⇧⌘+ (Cmd + Shift + Plus)
Remove a column	⇧⌘- (Cmd + Shift + Minus)

NOTE: You may wish to refer to the [Primer on Keyboard Shortcuts](#) in the [Appendix](#) for an explanation on how to use keyboard shortcuts.

TIP: You can also add/remove rows/columns from the Grid on the fly when [creating a new Shortcut](#).

Multiple Screens (Monitors)

Divvy is designed to support your multi-monitor workflow. When you activate Divvy, the Divvy panel will appear on each of your screens. This allows you to move/resize windows on any screen you choose, even if that window isn't currently on that screen.

Shortcuts

Divvy allows you to configure an unlimited number of shortcuts. A shortcut is simply a grid selection and a [key combination](#) for quickly applying that grid selection to a window.

There are two types of Divvy shortcuts: **Global** and **Local**. Here's a table to explain the differences:


Local Shortcut	Global Shortcut
Active only when Divvy panel is showing.	Active at all times, in all applications (as long as Divvy is running).
Slower to use because you must activate Divvy first.	Quicker to use because the shortcut is always available.
Simple. Can be as short as a single character or be combined with modifier keys. No risk of a shortcut colliding with a shortcut used in other applications.	More complex. Must be combined with modifier keys. Each shortcut runs the risk of colliding with shortcuts used in other applications. Care must be taken to prevent collisions, as Divvy cannot detect them.

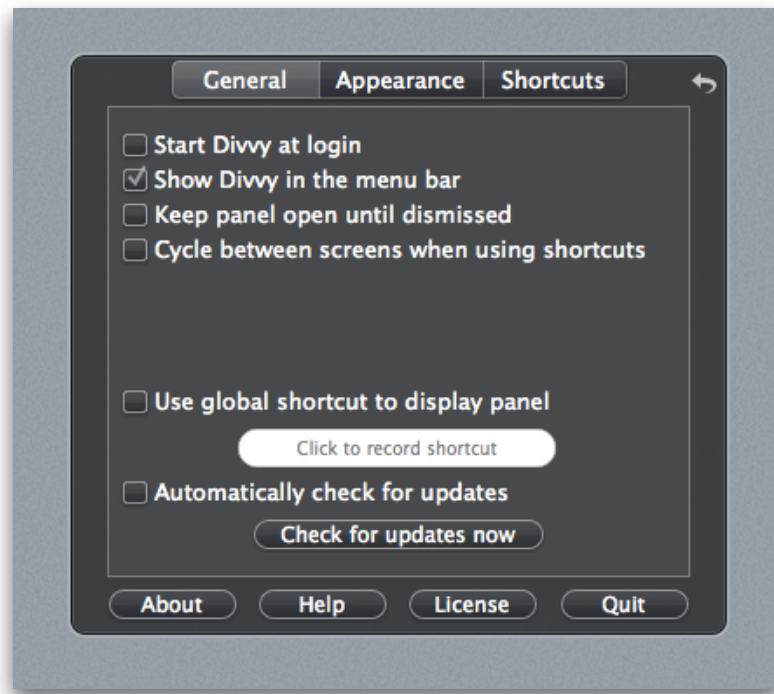
Refer to the [Shortcuts Preferences](#) section for more information on creating, editing, and deleting shortcuts.

TIP: Hold the Shift key while dragging a selection in the Grid to toggle the automatic dismissal behavior of the Divvy panel. For example, if you have “Keep panel open until dismissed” enabled in the Preferences, and you hold the Shift key while selecting in the Grid, the Divvy panel will automatically dismiss after resizing the window. This is also true if you add the Shift key when pressing a



Preferences

General Preferences

To access the Divvy General Preferences, [activate the Divvy panel](#) then press the gear button  in the upper-right corner of the Divvy panel, then click the “General” tab.




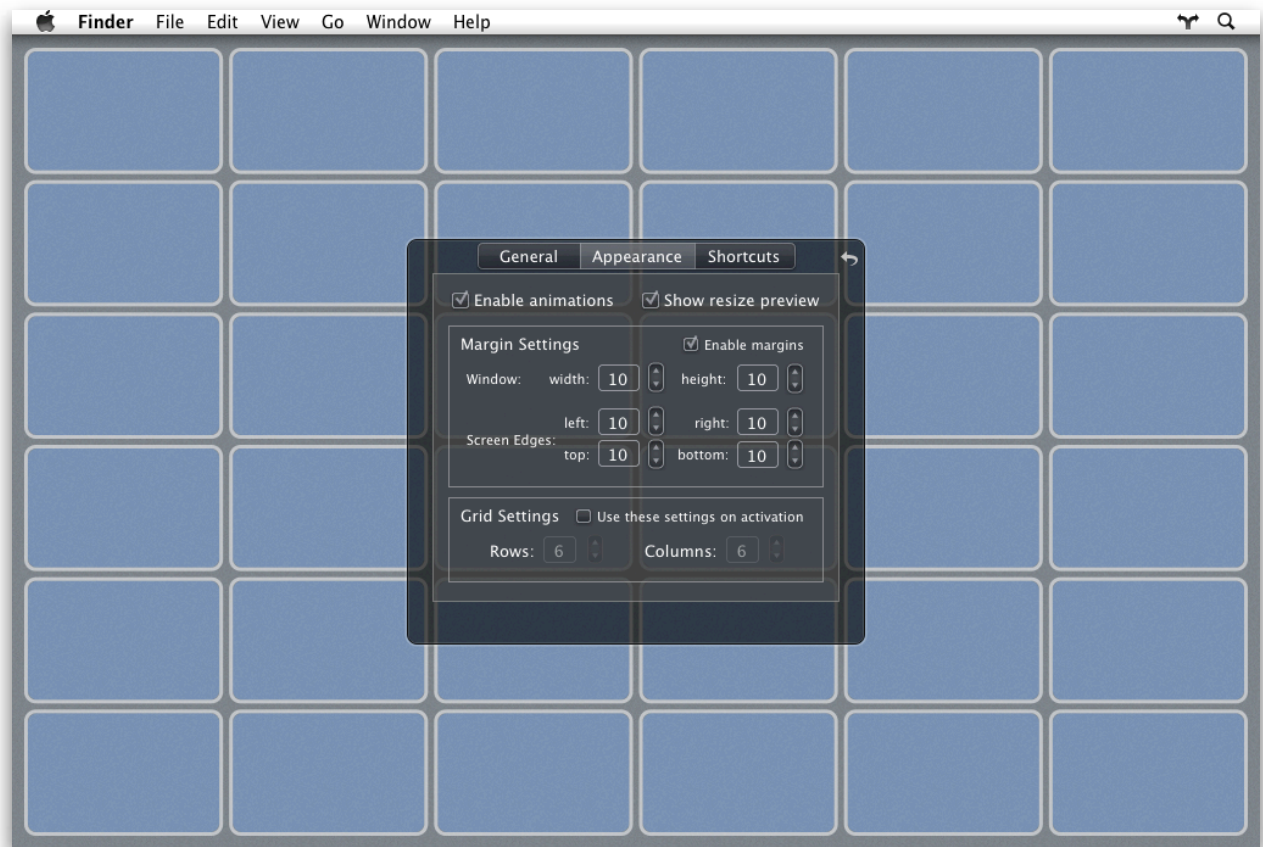
Setting	Description
Start Divvy at login	When enabled this creates a login item for Divvy in your “System Preferences > Accounts > Login Items” so that Divvy starts automatically whenever you login or restart your computer. Default: disabled

Setting	Description
Show Divvy in the menu bar	<p>Show the Divvy icon  in the menu bar at the top of the screen. If you prefer to access Divvy via the user configurable global keyboard shortcut (see below), you can use this option to disable the menu bar icon.</p> <p>Default: enabled</p>
Keep panel open until dismissed	<p>By default, the Divvy panel will automatically dismiss after you make a grid selection. If you frequently resize more than one window, try enabling this option to keep the panel open after a grid selection, which might save you some time. To dismiss the Divvy panel, simply press the Esc key, click the close button  in the upper-left, or press the global keyboard shortcut (see next option)</p> <p>Default: disabled</p>
Cycle between screens when using shortcuts	<p>When enabled you can press a shortcut multiple times to cycle the window from one screen to the next, through all your screens.</p> <p>This option works for global shortcuts as well as local shortcuts, but local shortcuts require that you also enable the “Keep panel open until dismissed” option. Otherwise, the shortcut will be applied to the screen on which the window currently resides.</p> <p>Default: disabled</p>
Use global shortcut to display panel	<p>A user assignable global keyboard shortcut for displaying and dismissing the Divvy interface.</p> <p>Default: disabled and shortcut unassigned</p>

Setting	Description
Automatically check for updates	Enable this option to be notified when there's a new version of Divvy available (recommended). Default: disabled

Appearance Preferences


To access the Divvy Appearance Preferences, [activate the Divvy panel](#) then press the gear button  in the upper-right corner of the Divvy panel, then click the “Appearance” tab.

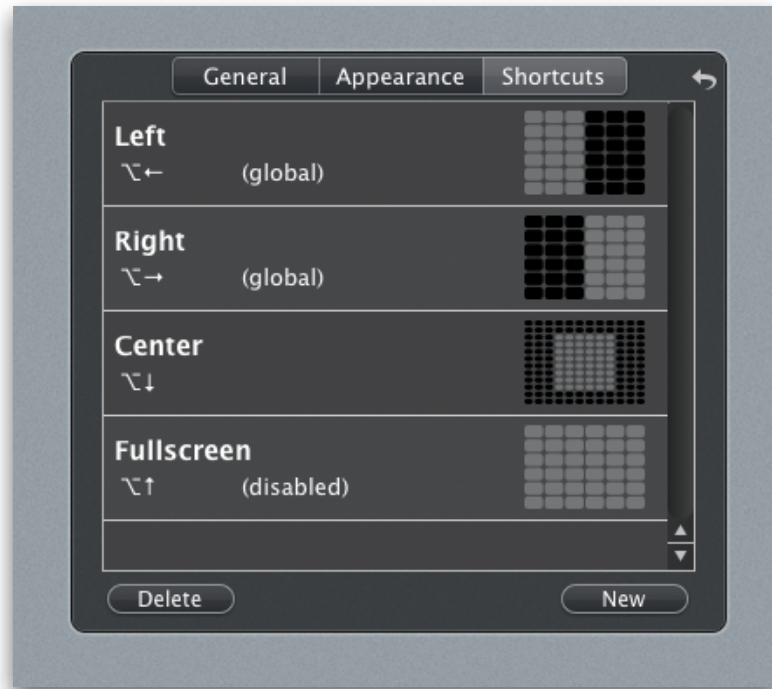


Setting	Description
Enable animations	<p>To improve performance on older systems, you may choose to disable animations.</p> <p>Also, if you have a newer (mid-2010) MacBookPros with automatic graphics switching, Divvy will cause the dedicated graphics to be running at all times. This can reduce your battery life and produce extra heat. Disable this option to prevent the dedicated graphics from switching on (you must quit and launch Divvy after choosing this option to switch back to the integrated graphics).</p> <p>Default: enabled</p>
Show resize preview	<p>As you hover over the Divvy grid, you will see a blue preview square that assists you in the placement of your window. Also, as you drag a selection on the grid, the preview will update to represent where the window will be placed when you finish your selection.</p> <p>Default: enabled</p>
Margin Settings	
Enable margins	<p>Enable this option to use margins which allows you to control the space around the edges of your screen and between windows.</p> <p>Default: disabled</p>
Window (width, height)	<p>Control the space (in pixels) between windows that are resized with Divvy. The live preview allows you to immediately see the effects of your margin settings on the grid.</p> <p>Default: 10 Range: 0-300</p>

Setting	Description
Screen Edges (left, right, top, bottom)	<p>Control the space (in pixels) around the screen edges and windows that are resized with Divvy. The live preview allows you to immediately see the effects of your margin settings on the grid.</p> <p>Default: 10 Range: 0-300</p>
Grid Settings	
Use these settings on activation Rows & Columns	<p>Enable this option to force the Divvy grid to always default to the provided Rows and Columns when the Divvy panel is shown.</p> <p>If you add/remove rows/column to the grid on the fly, those changes will be reverted to these Grid settings the next time the panel is shown.</p> <p>Default: disabled, 6 & 6</p>

Shortcuts Preferences

To access the Divvy Shortcuts Preferences, [activate the Divvy panel](#) then press the gear button  in the upper-right corner of the Divvy panel, then click the “Shortcuts” tab.



Create a New Shortcut

To create a new shortcut, either click the “New” button at the bottom of the Shortcuts Preferences or press $\text{⌘}N$ (Cmd + N) to be presented with a new blank shortcut as seen below:



Start by entering a name for this shortcut, this is used to help you identify the shortcut in the Shortcuts Preferences list. Decide if you want this shortcut to be Local or Global and check the "Global Shortcut" box if needed. Enter a keyboard shortcut and Divvy will let you know if there are any obvious conflicts with your choice. [Adjust the Grid](#) if you want, adding/removing row/columns as desired and/or subdivide the grid for more precise control. Finally, drag out your selection on the Grid. Press Accept if you're satisfied with this shortcut or Cancel to return to the Shortcut Preferences without creating the shortcut.

Edit a Shortcut

To edit a shortcut, double-click the shortcut in the Shortcuts Preferences. This will present you with a view where you can modify the settings for this shortcut. Press Accept if you're satisfied with this shortcut or Cancel to return to the Shortcut Preferences without modifying the shortcut.

Delete a Shortcut

To delete a shortcut, select the shortcut in the Shortcuts Preferences and either click the "Delete" button at the bottom or press the shortcut ⌘ ⌫ (Cmd + Delete)

Licensing

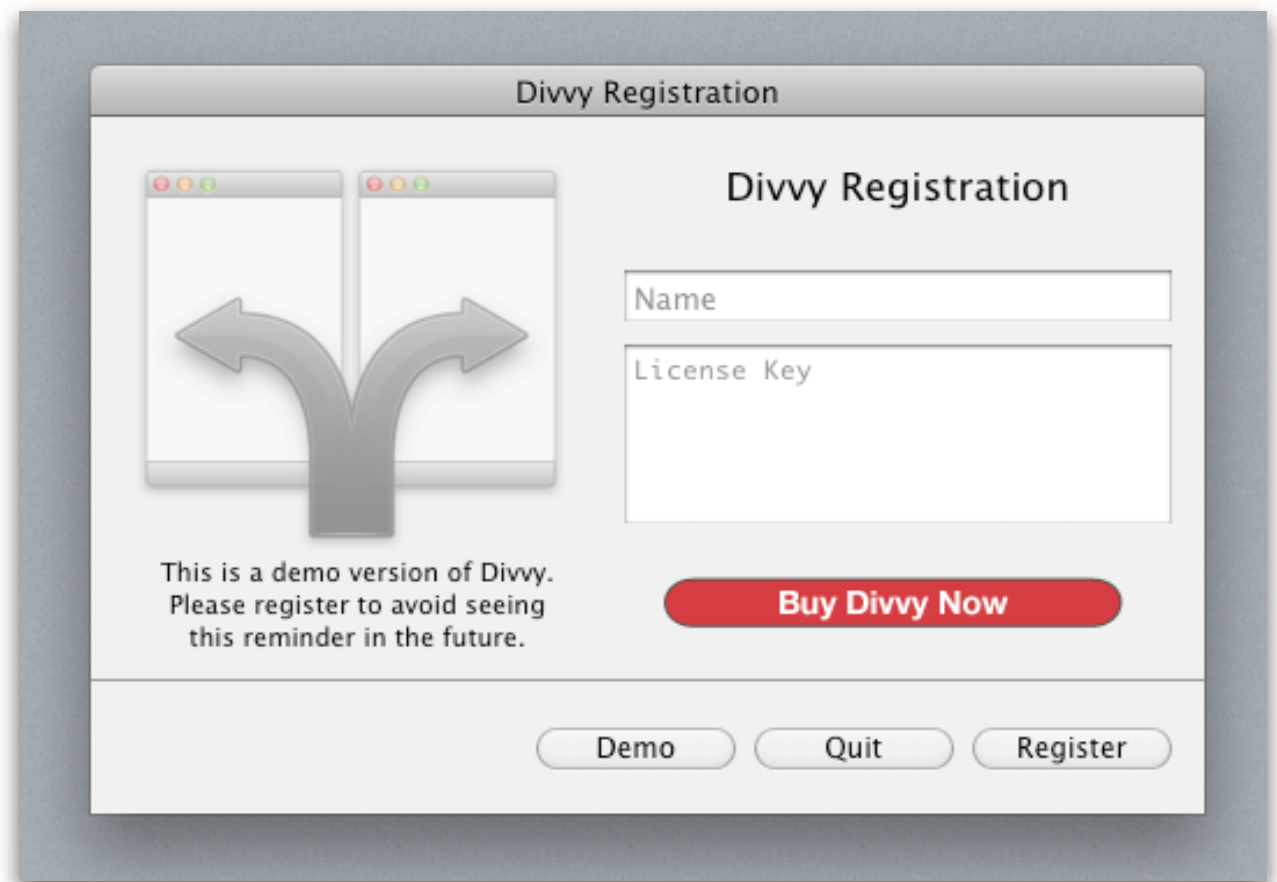
This section covers how to apply a license you've already purchased.

To purchase a license, please visit the Mizage online store at <https://store.mizage.com>

For questions relating to what a license covers, see the FAQ online at <http://mizage.com> or contact sales@mizage.com

When you purchase a Divvy license, you will receive an email with your license details.

To apply a Divvy license, [open the Divvy preferences](#) then press the "License" button at the bottom. This will show the Divvy Registration window. Enter your name exactly as it appears in the license email and copy/paste your license key. Press the Register button and you will be informed if the process was successful. Contact support@mizage.com if you require any assistance.



Appendix

Primer on Keyboard Shortcuts

You're probably used to seeing shortcuts in menus, but they can be a bit cryptic. A keyboard shortcut is a single key combined with zero or more modifier keys (^ ⌘ ⇧ ⌥). Here is a table explaining the modifier keys:

Modifier Key	Key Name
^	Control or Ctrl
⌘	Option or Alt
⇧	Shift
⌥	Command or Cmd

So when you see a shortcut like ⌘⌥A, this means to hold the Option key (⌘) and the Cmd key (⌥) then press the A key, then finally, release all keys.